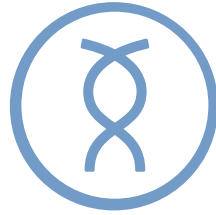


Bond/Etch



Peak LC Bond
Peak SE Primer
PermaQuick
PQ1
PQ Amalgam
Ultra-Etch
Porcelain Etch
Silane
Porcelain Repair Kit
EtchArrest
Ultra-Blend plus
Consepsis



PEAK[®]

Self-Etch Adhesive System

Peak[®] LC Bond

BOND RESIN



Inspiral Brush tip
 #1033-I - 500pk - pg 131

- Bonds superbly to both dentin and enamel
- Has optimal viscosity
- Resin cures with all lights
- Virtually eliminates post-op sensitivity
- Convenience of unit-dose delivery without the waste

Peak LC Bond is a syringe-delivered, light-cured resin bonding adhesive. It is uniquely designed for use following conditioning with either Peak SE Primer or Ultra-Etch phosphoric acid for a total etch technique. Peak LC Bond contains an ethyl alcohol solvent and is 7.5% radiopaque filler. It will cure with all quality curing lights, including LEDs.

Peak[®] SE Primer

SELF-ETCHING



Black Mini Brush tip
 #1432 - 500pk - pg 128

- Delivers fresh, stable chemistry
- Facilitates an easy, one-coat technique
- Places precisely and conveniently
- Eliminates the need for mixing wells or brushes

Peak SE Primer is a self-etching primer mixed and delivered in the unique JetMix syringe. JetMix technology separates precise quantities of strong 1.2pH acid and optimized priming resin to prevent the hydrolytic breakdown and degradation that occurs with other self-etch chemistries. Components are kept separate until the clinician activates them. Peak SE Primer is used with Peak LC Bond to achieve unsurpassed bond strengths.

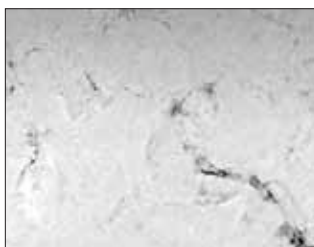
Uses

Ideal for all light-accessible bonding procedures, the Peak Self-Etch Adhesive System can also be used for immediate dentin sealing prior to impressions and temporization in order to decrease post-op and cementation sensitivity. Works well for bonding veneers.

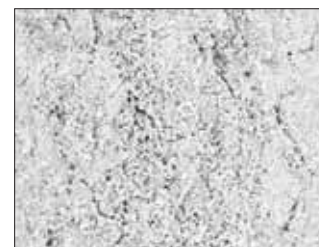
University Study. August 2007²



Micrograph of cut enamel treated with Peak SE Primer. Note the keyhole appearance of the etched enamel rods.



Micrograph of cut enamel treated with Clearfil SE Bond.



Micrograph of cut enamel treated with Adper Prompt L-Pop.

Independent university research establishes Peak's superiority in etching and bonding.

AA DR Abstract ID #0825³

Bond Strengths of Self-Etching Bonding Systems to Dentin and Enamel - R.B. PRICE, M. MCLEOD, and C.M. FELIX, Dalhousie University, Halifax, Canada

CUT ENAMEL

BONDING SYSTEM	BOND STRENGTH (MPa)	
Ultra-Etch + Peak LC	40.7 a	TE
Peak SE + Peak LC	38.3 a,b	SE
Ultra-Etch + PQ1	37.3 b	TE
Clearfil SE Bond	33.4 c	SE
Prompt L-Pop	32.9 c	SE

The same letters (a,b,c) indicate statistical similarity.

DENTIN

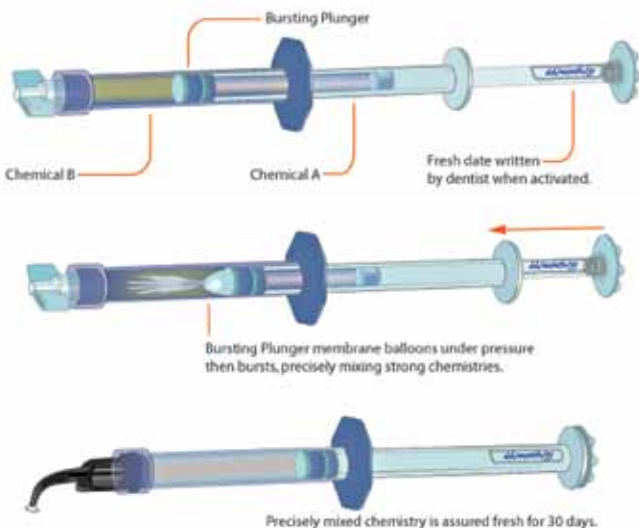
BONDING SYSTEM	BOND STRENGTH (MPa)	
Peak SE + Peak LC	35.7 a	SE
Ultra-Etch + Peak LC	35.5 a	TE
Clearfil SE Bond	35.1 a	SE
Ultra-Etch + PQ1	33.7 a	TE
Prompt L-Pop	25.0 b	SE

TE = Total-etch Technique (Etch + Rinse)

SE = Self-etch Technique

Trust Peak's JetMix™ Syringe
Always fresh. Always consistent. Always strong.

Prevent hydrolysis of bond resin, ensuring strong adhesion throughout shelf life.



#5130 - Peak LC Bond Intro Kit

- 1 - 1.2ml Peak LC Bond syringe
- 1 - 1.2ml Ultra-Etch syringe
- 20 - Blue Micro tips
- 20 - Inspirial Brush tips



Shelf Life: 18 months. Refrigerated.

#5133 - Peak LC Bond Refill

4 - 1.2ml syringes

#5132 - Peak LC Bond Econo Refill

20 - 1.2ml syringes



Shelf Life: 18 months. Refrigerated.

#5134 - Peak SE Primer Intro Kit

- 1 - 1.0ml Peak SE Primer syringe
- 1 - 1.2ml Peak LC Bond syringe
- 20 - Black Mini Brush tips
- 20 - Inspirial Brush tips



Shelf Life: 18 months. Refrigerated.

#5135 - Peak SE Primer Refill

4 - 1.0ml syringes



Shelf Life: 18 months. Refrigerated.

1 www.realityesthetics.com 2 Ultramorphological evaluation of enamel etching. M. VARGAS. Iowa College of Dentistry. August 2007. 3 AADR Abstract ID #0825, Dallas 2008. Bond Strengths of Self-Etching Bonding Systems to Dentin and Enamel.

PermaQuick®

TWO-PART BONDING SYSTEM



Black Mini Brush tip
#1432 - 500pk - pg 128

Inspiral Brush tip
#1033-I - 500pk - pg 131

- Rated highest bond strength by *Reality*
- Has a 40-month shelf life
- Primer improves with age
- Bonding resin is radiopaque
- Is technique insensitive
- Primer is tissue-kind, 1.82 pH
- Places directly
- Cures with all lights, even LEDs
- Provides optimal dentin and enamel conditioning²

PermaQuick Primer has a one-of-a-kind chemistry. The tissue-kind, ethyl alcohol primer contains natural, light polymerizable resins that help facilitate penetration into hydrophilic dentin substrates. These natural resins also provide a degree of elasticity, dissipating curing stresses and creating higher flexibility. PermaQuick Primer provides the optimum preparation for PermaQuick Bonding Resin, which is a 45% filled, fluoride-releasing, light-cured bonding resin that penetrates into primer-treated tubules and inter-tubular spaces. PermaQuick Bonding Resin is as radiopaque as dentin.

Uses

With minimal film thickness, PermaQuick is ideal for indirect bonding. It is also used alone as an enamel bonding resin wet composite as needed between incremental layers or when sculpting. It bonds to cast metal³, porcelain, amalgam³, dentin/enamel⁴, and composite.⁴

Light Cure Indirect



Etch and prime application, light cure. Apply PermaQuick bond resin to preparation. **DO NOT LIGHT CURE!** Apply luting resin to veneer. Seat veneer. Light cure bond resin and luting resin simultaneously.

Strongest two-resin system!

Highest bond strength to chemical cure composite.*
HIGHEST BOND STRENGTH PERIOD.
65.88 MPa!
 (78.0 MPa highest of set)

"The 4th generation technique may be old fashioned, but there is nothing better for dentin and enamel when you absolutely, positively have to be sure of the bond."
 DR. RICHARD C. NICHOLS – PHOENIX, AZ

"I would still rather have a 12-year-old bonding agent and a 20-year-old composite in my inventory than the newer systems today."
 DR. JEFF BRUCIA – SAN FRANCISCO, CA
<http://www.drbruciaspid.com/index.aspx?sec=news&sub=rad&pag=dis&itemid=301212&wf=176>

#633 - PermaQuick Primer Refill

#634 - PermaQuick Bond Resin Refill

4 - 1.2ml syringes



Shelf Life: 40 months. Refrigerated.

*Due to film thickness issues, use PermaFlo DC Primers for luting with chemical cure luting resins (e.g. PermaFlo DC) when light cure cannot cure all areas. 1 www.realityesthetics.com 2 Shear Bond Evaluation 24 Hour PermaQuick to Dentin. Ultradent Products, Inc. 1999 (Lit # 15) 3 Use PermaFlo DC Primers for luting with PermaFlo DC when light cure cannot cure all areas. 4 Hilgert LA et al: Adhesive procedures in daily practice: essential aspects. Compend Contin Educ Dent. 2008 May;29(4):208-15 U.S. Patent Numbers: 5,269,684; and 5,708,052.

PQ1®
 SINGLE RESIN BONDING

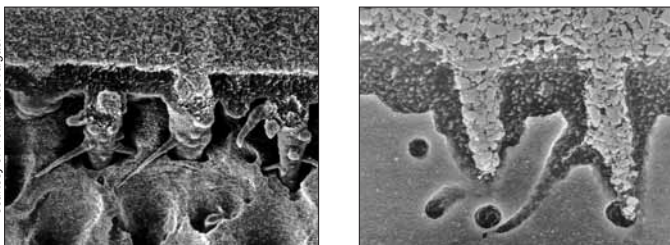


- High bond strength helps prevent microleakage
- Minimizes post-op sensitivity
- Has antimicrobial properties
- Is radiopaque
- Works regardless of the technique
- Places directly
- Cures with all lights²

PQ1 is a syringe-delivered, single-component, light-cured bonding agent that uses ethyl alcohol as a solvent. PQ1 is 40% filled and radiopaque.

Uses

PQ1's unique, patented chemistry bonds to dentin/enamel, cast metal,³ porcelain, amalgam,³ and composite. PQ1 is also effective for indirect procedures where light curing is possible.



NOTE UNSURPASSED FILLER PENETRATION FOR HIGH STRENGTH BONDING.

#615 - PQ1 Kit

- 2 - 1.2ml PQ1 syringes
- 2 - 1.2ml Ultra-Etch syringes
- 20 - Blue Micro tips
- 40 - Inspiral Brush tips



Shelf Life: 18 months. Refrigerated.

#641 - PQ1 Refill

4 - 1.2ml syringes

#1806 - PQ1 Econo Refill

20 - 1.2ml syringes



Shelf Life: 18 months. Refrigerated.

#1353 - PQ Amalgam Refill

4 - 1.2ml syringes

NOT AVAILABLE IN ALL COUNTRIES



Shelf Life: 18 months. Refrigerated.

"I have used Prime & Bond, Single Bond*, Solo Bond,* and a few others. The consistency of results has been better with PQ1 than with any of the others, and 90% of the time, there is less sensitivity."*

DR. ROBERT ANDERSON – CLEARFIELD, UT

"Before using PQ1, I did not trust my adhesive. Mechanical retention was still my only security. Since switching to PQ1, I don't need undercuts in my preps and I no longer use any pins."

DR. MICHAEL STEPHENS – SAN ANTONIO, TX

"PQ1 is the best bonding system on the market today. Patients experience no sensitivity and PQ1 provides unparalleled bond strength, even on Class IV restorations!"

DR. ROBERT J. PASCO – ALCOA, TN

"PQ1 has virtually eliminated post-op sensitivity in my practice. I had tried all the other top bonding agents as well as every trick in the book. I began using PQ1 a few years ago. It works so well that I haven't tried etching primers or other new products. Why switch from a sure thing?"

DR. EARL R. LARSON – CHESTERFIELD, MO

* These tradenames belong to companies other than Ultradent Products, Inc. 1 www.realityesthetics.com 2 Not recommended with argon lasers. 3 We recommend PQ1 Amalgam for highest bond strength with amalgam placement and to sand blasted cast metal. 4 Shear Bond comparison PQ1 Immediate to Dentin. Ultradent Products, Inc. 2001 (Lit #14) 5 Post Operative Tooth Sensitivity, Clinical Research Associates Newsletter 1999 Nov: 23(11)3. U.S. Patent Nos: 5,269,684 and 5,708,052.

Ultra-Etch®
ETCHANT



Inspiral Brush tip
#1033-I - 500pk - pg 131



Blue Micro tip
#1436 - 500pk - pg 129

- Self-limiting
- Penetrates smallest fissures but won't migrate on a vertical surface
- Increases bond strength and reduces sensitivity
- Places precisely
- Rinses cleanly — leaves no residue

Ultra-Etch is a 35% phosphoric acid solution. It features ideal viscosity, which, along with the use of the Blue Micro or Inspiral Brush tip, facilitates precision placement and superior control. Ultra-Etch is self-limiting in its depth of etch (average depth of 1.9µm with 15-second etch)², creating an etch pattern that adhesives can penetrate for increased bond strength and reduced sensitivity. Contemporary studies demonstrate Ultra-Etch as the optimum “total etch” etchant.³

Though Ultra-Etch is viscous, it can penetrate into the smallest fissures or occlusal surfaces due to physical and chemical properties that promote capillary action. Its ideal viscosity maintains a layer thick enough to prevent premature drying.

Uses

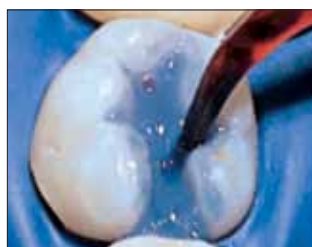
Ultra-Etch can be placed in any location, including lingual approaches to Class III restorations. It works nicely for etching before bonding composites, sealants, or bonding adhesives.

Use Peak LC Bond Resin with Ultra-Etch for a Total-Etch Technique



1.9µm depth

Ultra-Etch phosphoric acid is proven to be uniquely self-limiting in its depth of etch, with an average depth of 1.9µm using 15-second etch. Liquid phosphoric acid (37%) showed an average of 5.0µm at 15 seconds, and a competing “polymer thickened” etchant a 4.8µm depth.³ Acids with this greater depth of etch go beyond the optimum level and increase the potential for incomplete resin impregnation.



Clinical experience and FE-SEM evaluations³ show that 15 seconds etch time on both dentin and enamel provides optimal conditioning of both tissues. Air/water rinse. Blot excess water off, leaving surface visibly wet.

Listed as a “CAN’T LIVE WITHOUT” product by a prominent independent research institute for more than 20 years.⁴

Listed as a “CAN’T LIVE WITHOUT” product for more than 20 years.⁵

Top rated 14 years and running!

#163 - Ultra-Etch Kit

4 - 1.2ml syringes
20 - Blue Micro tips



Shelf Life: 48 months.

#167 - Ultra-Etch Econo Kit

20 - 1.2ml syringes
40 - Blue Micro tips



Shelf Life: 48 months.

#383 - Ultra-Etch IndiSpense Kit

1 - 30ml IndiSpense syringe
20 - Blue Micro tips
20 - 1.2ml empty syringes



Shelf Life: 48 months.

#164 - Ultra-Etch Refill

4 - 1.2ml syringes



Shelf Life: 48 months.

#168 - Ultra-Etch Econo Refill

20 - 1.2ml syringes

#1407 - Ultra-Etch Econo Refill

50 - 1.2ml syringes



Shelf Life: 48 months.

#685 - Ultra-Etch IndiSpense Syringe

1 - 30ml syringe



Shelf Life: 48 months.

"Ultra-Etch has the best consistency and viscosity I've found. I've used it every day in my practice for over 19 years. Etches that come in kits or as samples are never opened ... and some are hard to give away!"

DR. C. BRADFORD THOMAS – GALVESTON, TX

"Year after year, Ultra-Etch provides ease of application, instant rinse-ability, and consistent etch pattern. It is, quite simply, the best!"

DR. ROBERT J. MAROLT – WHITE BEAR LAKE, MN

"Although Ultra-Etch is a common, everyday product, I can rave about it since I use it every day, all day long. I like the color and consistency of the gel, and I am always sure of its quality. I have been using it for many, many years and I can't live without it."

DR. GERALD BLOOM – HOLLISTON, MA

"I am a self-proclaimed 'bondodontist.' I use Ultra-Etch almost every time I sit down to work. It is perfect – especially the viscosity. It goes where you want it to go and stays there until I rinse it off. Other reps are always bringing me something to try and it either doesn't flow, flows too much, or doesn't come in a syringe. Enough said."

DR. DAVID D. MAY – HEMET, CA

"Ultra-Etch has the perfect consistency. It goes on the tooth nice and smoothly, not too runny or too thick. I've tried all the other brands, but I keep coming back to my good old Ultra-Etch. Fun blue color to boot. Ultra-Etch makes etching satisfying!"

DR. JEANY LEE – SEATTLE, WA

"Ultra-Etch is the only one on the market that flows smoothly and stays where you place it. The etch never dries out and the delivery tips are superb for allowing the practitioner to precisely place the product. Whenever I have the unfortunate opportunity to use another company's acid etch product, I cannot wait to use Ultradent's acid etch again. It makes me appreciate the product even more!"

DR. ROBERT COX – RICHMOND, VA

1 www.realityesthetics.com 2 Perdigao J, Lambrechts P, Van Meerbeek B, Vanherle G. A study of the ultra-morphology of etched dentin. (Abstract #2982) J Dent Res. 1996;75:390 (Lit #41) 3 Perdigao J, Lambrechts P, Van Meerbeek B, and Vanherle G, A field emission SEM study of dentin etched with different phosphoric acid compositions and/or concentrations. Leuven, Belgium: Katholieke Universiteit te Leuven, 1994. (Lit #7) 4 "Can't Live Without" Clinical Research Associates Newsletter, Volume 21, Issue 7, July, 1997 5 Jackie Syrop. Tried & True Ultra-Etch. Dental Product Shopper 2008 July/Aug;2(6):76-77

Ultradent® Porcelain Etch and Silane



Black Mini Brush tip
#1432 - 500pk - pg 128

Inspiral Brush tip
#1033-I - 500pk - pg 131

1 minute Etch — 1 minute Silane

- Etch is easy to control and place
- Will not stain composite or resin cement
- Yields highest porcelain-to-resin bond strengths²
- Silane is a single-component

Ultradent Porcelain Etch is a buffered, viscous, 9% hydrofluoric acid. Silane is a single-component solution.

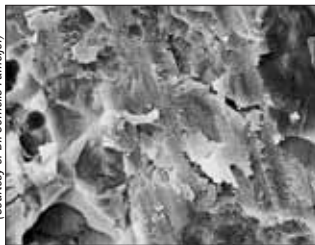
Uses

Porcelain Etch is designed for intraoral or extraoral porcelain etching. Use it to etch porcelain or old macro-filled composites prior to bonding and repair. Also use it when in-office etching of indirect restorations, such as veneers, inlays, etc., is required. Follow porcelain etching with Silane application. Studies have demonstrated that Silane, when used with Porcelain Etch and Peak LC Bond, PQ1, or PermaQuick Bonding Resin, yields the highest bond strength to porcelain when compared with other porcelain bonding products.²

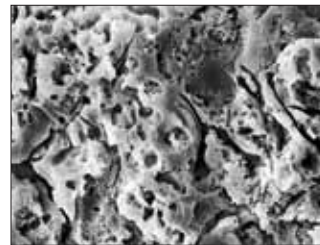
"When I use Ultradent Porcelain Etch and Silane, my veneer cases bond securely and the patient can feel my confidence. At the end of the appointment, I can smile along with my patient."

DR. TERRY BRAUN – OCALA, FL

Courtesy of Dr. Cornelis Pameijer



1. Diamond cut porcelain surface.



2. Same porcelain following one minute etch with Ultradent Porcelain Etch.



1. Porcelain Etch is delivered from the Inspiral Brush tip to prepared porcelain, after placement of EtchArrest barrier.



2. Silane is applied, followed by Ultra-Etch and Peak LC Bond Resin.

#405 - Porcelain Etch Kit

- 2 - 1.2ml Porcelain Etch syringes
- 2 - 1.2ml Silane syringes
- 20 - Black Mini Brush tips
- 20 - Inspiral Brush tips



Shelf Life: 36 months.

#406 - Porcelain Etch Mini Refill

- 2 - 1.2ml syringes



Shelf Life: 36 months.

#410 - Silane Mini Refill

- 2 - 1.2ml syringes



Shelf Life: 36 months.

1 www.realityesthetics.com 2 Pameijer CH, Louw NP, Fischer D. Surface preparation and repair of fractured porcelain and its resistance to shear strength. J Amer Dent Assoc 127:203-209, 1996 (Lit #6) U.S. Patent Numbers: 5,269,684.

Ultradent® Porcelain Repair Kit



ETCH, SILANE, BOND RESIN, AND FLOWABLE COMPOSITE

- Includes all necessary pre-composite placement materials
- Yields high bond strengths
- Provides quick, easy repairs without mixing

Uses

Porcelain repair procedures are becoming more common. It is financially advantageous and less invasive to repair, rather than replace, a chipped porcelain restoration. The Ultradent Porcelain Repair Kit contains all the products and tips needed for composite to porcelain, porcelain to metal, and porcelain to porcelain repairs.

"Ultradent's Porcelain Repair Kit gives us a good, dependable system for repairing bridges and crowns that chip or break."
 DR. FRED WALDSCHMIDT – BOURBONNAIS, IL

"Ultradent's Porcelain Repair Kit is the only one that works. It includes all the necessary materials and isn't overpriced. All the products are quality."
 DR. LLOYD B. SCHWARTZ – TROY, NY

"The Ultradent Porcelain Repair Kit actually works! I have made repairs and patients haven't had to come back. With other kits I have tried, the patient ends up having to come back due to refracturing."
 DR. FELICIA CHU – ELGIN, IL

Rated excellent by a prominent independent research institute.²

#1108 - Ultradent Porcelain Repair Kit

- 1 - 1.2ml PermaFlo Dentin Opaquer syringe
- 1 - 1.2ml EtchArrest syringe
- 1 - 1.2ml OpalDam syringe
- 1 - 1.2ml PQ1 syringe
- 1 - 1.2ml Porcelain Etch syringe
- 1 - 1.2ml Ultradent Silane syringe
- 20 - Black Mini Brush tips
- 20 - Black Micro tips
- 20 - Micro 20ga tips
- 20 - Inspirial brush tips



Shelf Life: 18 months.

EtchArrest®

ACID BARRIER/NEUTRALIZER



Black Micro tips
 #1435 - 500pk - pg 129

- Neutralizes acid etchants upon contact
- Protects soft tissues and adjacent restorations
- Prevents bond strength reduction during porcelain repair²
- Appears visible against tissues and acid etching agents
- Rinses easily

When hydrofluoric acid contacts enamel during porcelain repair procedures, formation of calcium fluoride occurs and bond strengths to enamel drop significantly.² Therefore, it is vital to treat porcelain and tooth structure separately with appropriate acids. EtchArrest isolates hard and soft tissues when rubber dam placement is not practical.



Protects adjacent porcelain and soft tissue from hydrofluoric acid. Etch dentin simultaneously with Ultra-Etch while etching porcelain with Ultradent Porcelain Etch to keep hydrofluoric off dentin (hydrofluoric will prevent quality adhesion to dentin and enamel). Rinse clean, apply Ultradent Silane, apply Peak LC Bond or PQ1 Bonding adhesive, apply PermaFlo Dentin Opaque Masking Resin (see PermaFlo), and restore with Vit-I-escence.

#625 - EtchArrest Kit

- 4 - 1.2ml syringes
- 20 - Black Micro tips



Shelf Life: 36 months.

1 www.realityesthetics.com 2 Clinical Research Associates Newsletter, Volume 24, Issue 11, November 2000

1 www.realityesthetics.com 2 Barghi N, Covington K, Fischer DE, Herbold ET. Bonding to enamel/dentin etched with phosphoric and hydrofluoric acids. Pract Proced Aesthet Dent. 2004 Oct;16(9):653-9.

Ultra-Blend® Plus

LINER



- Controlled, precise syringe delivery
- No mixing necessary
- Will not dissolve over time
- Light cured when clinician is ready
- Radiopaque

Ultra-Blend plus is a light activated, radiopaque, water insoluble material with calcium hydroxide in a urethane dimethacrylate base. Compared to other liners, Ultra-Blend plus is highly filled for minimal shrinkage and water absorption.

"We have been using Ultra-Blend on a daily basis. I use it primarily in deeper cavities as a liner and insulator. The syringe makes it easy to dispense the material and it hardens quickly with the curing light. It is reliable and has adequate adhesion. I think all of Ultradent's products are excellent."
DR. TERRY BRAUN – OCALA, FL

"Ultra-Blend, used with Black Micro tips, is the most efficient method for protecting pulp."
DR. SHELDON BORUCHOW – AUDUBON, PA

"Ultra-Blend has been working well and is easy to use compared to other products."
DR. SUZETTE NIKAS – CARMEL, IN

"Ultra-Blend application is easy!"
DR. MIMI V. JOHNSON – BELLWOOD, IL

Proven best for pulp capping.¹



1. Use Ultra-Blend plus near pulp (pink) and for small non-hyperemic exposure. If larger exposure and/or hyperemic pulp, initiate endodontic therapy.

2. Apply Consepis antibacterial solution with plastic Blue Mini Dento-Infuser for 60 seconds with gentle scrubbing action. Gently air dry (don't rinse).



3. With Black Micro tip, apply Ultra-Blend plus to dry dentin at exposure border (or over thin pink dentin); cover exposure and light cure. Minimize dentin coverage to maximize available dentin for bonding.



4. Etch and bond using Peak LC Bond or PermaQuick bonding instructions and restore composite.

#415 - Ultra-Blend plus Kit

- 2 - 1.2ml Ultra-Blend plus Dentin syringes
- 2 - 1.2ml Ultra-Blend plus Opaque White syringes
- 20 - Black Micro tips
- 20 - Black Mini tips



Shelf Life: 24 months. Refrigerated.

#416 - Ultra-Blend plus Dentin Refill #417 - Ultra-Blend plus Opaque White Refill

- 4 - 1.2ml syringes



Shelf Life: 24 months. Refrigerated.

¹ Pameijer CH, Stanley HR, Norval G. Pulp capping with a new adhesive light cured calcium hydroxide formula. (Abstract #757) J Dent Res 1998;77:200. (Lit # 43)
U.S Patent No.: 6,071,528.

Consepsis®

CHLORHEXIDINE ANTIBACTERIAL SOLUTION



Blue Mini DI tip
#1440 - 500pk - pg 129



Black Mini Brush tip
#1432 - 500pk - pg 128

- Provides the longest and most effective antimicrobial activity²
- Reduces risk of recurrent caries
- Reduces potential for post-operative sensitivity
- Increases bond strengths with many dentin bonding agents³

Chlorhexidine hand soaps can adversely affect bond strength with dentin bonding agents. Consepsis is a 2.0% chlorhexidine gluconate solution free of emollients that interfere with bond strength.⁴

Uses

Minimize post-op pulpitis and sensitivity by thoroughly cleaning and disinfecting the preparation prior to sealing and restoring. Use prior to crown cementation, luting (provisional and/or permanent), and direct restorative placement, as well as procedural endodontic disinfection. During pulp capping, acidic etchants and hemostatic agents can cause disastrous effects on the pulp. Disinfect with near-neutral Consepsis, which can also be used to passively control non-hyperemic bleeding.

Use Consepsis prior to DBA application to disinfect root surface with sensitive root treatment or when bonding.



Disinfect preparations by applying Consepsis. Apply with the Blue Mini Dento-Infusor or Black Mini Brush tip.



Disinfect canals during endo when sodium hypochlorite has been used.

#490 - Consepsis Kit

- 4 - 1.2ml syringes
- 20 - Blue Mini Dento-Infusor tips
- 20 - Black Mini Brush tips

NOT AVAILABLE IN ALL COUNTRIES



Shelf Life: 48 months.

#404 - Consepsis IndiSpense Kit

- 1 - 30ml IndiSpense syringe
- 10 - Blue Mini Dento-Infusor tip
- 10 - Black Mini Brush tips
- 20 - 1.2ml empty syringes

NOT AVAILABLE IN ALL COUNTRIES



Shelf Life: 48 months.

#491 - Consepsis Econo Refill

- 20 - 1.2ml syringes

NOT AVAILABLE IN ALL COUNTRIES



Shelf Life: 48 months.

#687 - Consepsis IndiSpense Syringe

- 1 - 30ml syringe

NOT AVAILABLE IN ALL COUNTRIES



Shelf Life: 48 months.

1 Reality Ratings, Volume 20, 2006, pg 91. 2 M. R. Leonardo, DDS, PhD, M. Tanomaru Filho, DDS, P. Nelson Filho, MSD, K/C. Bonifacio, MS, and I.Y. Ito, DDS, PhD In Vivo Antimicrobial Activity of 2% Chlorhexidine Used as a Root Canal Irrigating Solution J Endod; 1999, 25(3): 167 - 171 3 Cao DS, Hollis RA, Christensen GJ, Christensen RP. Effect of tooth disinfecting procedures on dentin shear bond strength. (abstract #493) J Dent Res 1995; 74:73. (Lit #12) 4 Clinically significant research. Clinical Research Associates Newsletter 1994 Apr;18(4):3

Join the Club, and Help Fight Cavities!



Before.



After.

Let the UltraSeal No Cavities Club Help You Place More Sealants

Ultradent's "UltraSeal No Cavities Club" is an engaging way to educate pediatric patients and their parents about the importance of dental sealants. Membership earns patients a "Hero" sticker, as well as informative, interactive marketing materials. Membership also includes access to an interactive, child-friendly website packed with activities, games, and tips for maintaining great oral health.

Why UltraSeal XT plus?

Effective and easy to use, UltraSeal XT plus is a safe, reliable sealant for pits and fissures.

- Featuring the ideal viscosity, UltraSeal XT plus flows easily into the tiniest pits and fissures, yet doesn't run after placement.
- At 58% filled, UltraSeal XT plus offers strength, wear resistance, and retention rates.
- The Inspiral Brush Tip thins UltraSeal XT plus as it pushes it through internal helical channels, affording precise and accurate application into occlusal grooves.
- UltraSeal XT plus is available in four shades. Opaque White offers easy visibility when placing sealant, and visual cues of retention at follow-up visits.
- UltraSeal XT plus is fluoride releasing.

For a variety of UltraSeal Marketing Materials, please see page 135.

The American Academy of Pediatric Dentistry (AAPD) and Healthy Smiles, Healthy Children (HSHC) reviewed this material to ensure scientific accuracy. However, the use of the AAPD and HSHC logos does not imply endorsement of Ultradent products.