

Endodontics



Endo-Eze AET
Endo-Eze TiLOS
Endo-Eze AET Files
Access Burs
Endo-Eze Rulers
Endo-Eze AET Handpiece
EndoREZ
EndoREZ Points
Paper Points
EndoREZ Accelerator
Sable Seek
Seek
ChlorCid
ChlorCid V
File-Eze EDTA
Consepsis
Consepsis V
EDTA Solution
UltraCal XS
Citric Acid 20%
PermaFlo Purple
Luer Vacuum Adapter
Deliver-Eze Brush Tips
UniCore



Endo-Eze® AET

ANATOMIC ENDODONTIC TECHNOLOGY

- Reciprocating contra-angle greatly reduces the risk of file separation
- More affordable than other systems
- Relies on a minimally invasive approach
- Addresses each canal according to its unique anatomy
- Results in a simplified procedure
- Can be hybridized with current rotary techniques and systems

Endo-Eze AET consists of unique technology, devices, techniques, and materials (many of them patented designs from Ultradent) to solve everyday endodontic problems with common sense.

Mechanical "rotary" instruments create a round hole to the apex and don't always adequately address ribbon-shaped or ovoid canals. Rather than using a rotary system that forces the canal to adapt to the instrument, Endo-Eze AET uses instruments and methodologies that adapt to the natural anatomy of the canal.

This kit contains the Endo-Eze AET contra-angle (no air motor) with a full range of files, EndoREZ obturation kit, a lubricant and syringes.

#5908 - Endo-Eze AET Standard Mini Technique Kit w/Contra-Angle Only

- 1 - Endo-Eze AET reciprocating contra-angle (standard E-type attachment)
- 2 - 2ml EndoREZ Dual Barrel syringes
- 6 - Endo-Eze patient kits
- 10 - Skini syringes
- 10 - Mixing tips
- 12 - NaviTip tips

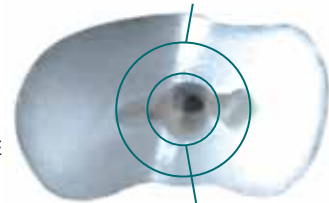
The Mini technique kit with TiLOS contains the Endo-Eze AET contra-angle (no air motor) with the TiLOS Procedure Packs.

#5924 - Endo-Eze AET Mini Technique Kit with TiLOS*

- 1 - Endo-Eze AET reciprocating contra-angle (standard E-type attachment)
- 2 - 2ml EndoREZ Dual Barrel syringes
- 10 - Skini syringes
- 10 - Mixing tips
- 12 - NaviTip tips
- 2 - #7583 - TiLOS Short RediPacks
- 2 - #7586 - TiLOS Short Apical Finishing Packs
- 1 - #7584 - TiLOS Medium RediPack
- 1 - #7587 - TiLOS Medium Apical Finishing Pack

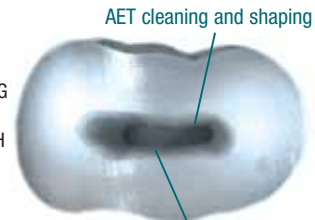
Diameter that would be required to clean entire canal with only a rotary file

UNNECESSARY DENTIN REMOVAL CAN WEAKEN TOOTH STRUCTURE



Realistic enlargement with rotary file over instruments centrally and requires additional instrumentation laterally

AET PRESERVES DENTIN BY UTILIZING A MINIMALLY INVASIVE APPROACH TO CANAL INSTRUMENTATION



AET cleaning and shaping

Dentin intact



Clinical perception



90° reality

This kit contains the Endo-Eze AET contra-angle (no air motor) with a full range of files, EndoREZ obturation kit, a lubricant, and syringes.

#5907 - Endo-Eze AET Standard Technique Kit w/Contra-Angle Only

- 1 - Endo-Eze AET reciprocating contra-angle (standard E-type attachment)
- 1 - Cleaning and Shaping Kit
 - 6 - Endo-Eze patient kits
 - 6 - Auxiliary "C" files
 - 18 - Assorted apical files
 - 25 - Endo-Eze rulers
 - 120 - Assorted absorbent paper points
 - 1 - Riitano access bur kit
 - 250 - Endo stops
 - 20 - Capillary tips 0.014"
 - 4 - 1.2ml File-Eze syringes
 - 6 - 5ml Irrigating syringes
 - 20 - Assorted NaviTips - 29ga
 - 10 - Luer Vacuum Adapters
- 1 - EndoREZ Obturation Kit 0.02 Taper

"Thanks to your Endo-Eze system, I am able to care for my patients' endodontic needs quickly and effortlessly on the same day that they call the office. It has increased my production from 17% to 22%. The Endo-Eze system has breathed new life into my practice and I encourage all my friends in dentistry to use the same system."
DR. RYAN D. CULLINAN – GLENDALE, AZ

"Endo-Eze has made my appointments a breeze and time efficient. Thanks!"
DR. SCOTT SCHUMANN – GROVE CITY, OH

Affordable shaping files and apical files are packaged in convenient 'Patient Kits.'



TiLOS RediPack is an introductory sequence of files designed specifically to handle the most common root canal procedures.
 * Included in part #5924 and #5909.

NaviTips (page 16) are ideal for flexible, accurate delivery of irrigants and EndoREZ.



ChlorCid sodium hypochlorite solution is used for irrigation, debridement, and disinfection.

Skini Syringes work for fast and precise delivery of EndoREZ into canal spaces.



Solution is available in syringe delivery for lubrication during instrumentation.



Luer Vacuum Adapters help "suck canals dry."



EndoREZ Points with resin-coated gutta percha.



Rittano Access Bur kit offers five high performance burs for establishing straight-line access.



Use auxiliary "C" files for canal finding, calcified canals, and recapitulation.



Endo-Eze AET handpiece offers minimally invasive 30-degree reciprocating motion.

Endo-Eze rulers provide convenient and accurate measurement of canal length.



The Z-Axis kit enables the clinician to hybridize existing rotary systems with the AET philosophy of instrumenting the canal according to its natural anatomy.

#5906 - Endo-Eze AET Z-Axis Technique Kit

- 1 - Reciprocating contra-angle
- 1 - EndoREZ Obturation Kit 0.02 Taper
- 4 - File-Eze 1.2ml syringes
- 8 - Shaping File kits (2 each size)
- 25 - Endo-Eze rulers
- 120 - Assorted absorbent paperpoints
- 1 - Riitano access bur kit
- 20 - Capillary Tips 0.014"
- 20 - Assorted NaviTips - 29ga
- 10 - Luer Vacuum Adapters
- 1 - 30ml EDTA Solution
- 1 - DermaDam/DermaFrame Sample

Note: This kit was designed for clinicians who wish to use the Endo-Eze Technique with their existing rotary system for apical shaping and sizing.

The Z-Axis kit with TiLOS contains the Endo-Eze AET contra-angle (no air motor) with the TiLOS Procedure Packs.

#5909 - Endo-Eze AET Z-Axis Technique Kit with TiLOS*

- 1 - Reciprocating contra-angle
- 1 - EndoREZ Obturation Kit 0.02 Taper
- 4 - File-Eze 1.2ml syringes
- 25 - Endo-Eze rulers
- 120 - Assorted absorbent paperpoints
- 1 - Riitano access bur kit
- 20 - Capillary Tips 0.014"
- 20 - Assorted NaviTips - 29ga
- 10 - Luer Vacuum Adapters
- 1 - 30ml EDTA Solution
- 1 - DermaDam/DermaFrame Sample
- 2 - #7583 - TiLOS Short RediPacks
- 2 - #7586 - TiLOS Short Apical Finishing Packs
- 1 - #7584 - TiLOS Medium RediPack
- 1 - #7587 - TiLOS Medium Apical Finishing Pack



ENDO-EZE™
TiLOS®
**STRENGTH MEETS
FLEXIBILITY**

Endo-Eze® TiLOS®
INSTRUMENTS AND HAND FILES

- A hybrid system of stainless steel and NiTi files optimized for Ultradent's 30° reciprocating handpiece
- Available in pre-configured patient packs, apical finishing packs, and refill packs
- Autoclavable patient packs feature a built-in measurement device, a stabilizing easel stand, and an Endo Stop dispenser in the lid
- Complete, straightforward instrumentation sequence ideal for all endodontic cases
- Files can be sterilized up to four times

An evolution in Ultradent's Anatomic Endodontic Technology, TiLOS is a hybrid file system that combines stainless steel and NiTi files to offer the best features of step-back and crown-down instrumentation in a reciprocating motion; it offers safe, efficient, and predictable results.

Optimized for Ultradent's 30° reciprocating handpiece, TiLOS files are available in pre-configured patient packs, apical finishing packs, and refill packs. The TiLOS system includes stainless steel and NiTi hand files as well as engine driven stainless steel shaping files and NiTi transitional files.



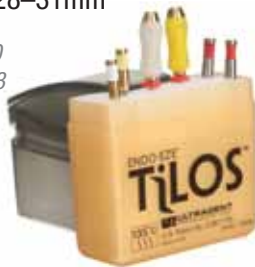


RediPack

The new TiLOS RediPack is an introductory sequence of files designed specifically to handle the most common root canal procedures.

- #7589 - Pedo/Cervical Enlargement RediPack 16–19mm
- #7590 - Short Patient RediPack 20–23mm
- #7591 - Medium Patient RediPack 24–27mm
- #7592 - Long Patient RediPack 28–31mm

2 - Hand files - 1 each of #15 and #20
 2 - Shaping files - 1 each of #2 and #3
 2- Transitional files - 1 each of Taper .08 and .04



- #7586 - Short Apical Finishing Pack 20–23mm
- #7587 - Medium Apical Finishing Pack 24–27mm
- #7588 - Long Apical Finishing Pack 28–31mm

5 - Apical files - 1 each of #25, #30, #35, #40, and #45



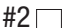
- #7582 - Pedo/Cervical Enlargement Pack 16–19mm
- #7583 - Short Patient Pack 20–23mm
- #7584 - Medium Patient Pack 24–27mm
- #7585 - Long Patient Pack 28–31mm

2 - Hand files - 1 each of #15 and #20
 3 - Shaping files - 1 each of #1, #2, and #3
 3 - Transitional files - 1 each of #25 Taper .08, .04, and .02



- Brass support for control
- Soft grip for comfort

Stainless Steel Shaping Files*

SIZE	16–19mm	20–23mm	24–27mm	28–31mm
#1 	#7566	#7567	#7568	#7569
#2 	#7570	#7571	#7572	#7573
#3 	#7574	#7575	#7576	#7577
#4 	#7578	#7579	#7580	#7581

5 - Files



Stainless Steel Hand Files*

SIZE	19mm	23mm	27mm	31mm
#08 	#7550	#7551	#7552	#7553
#10 	#7554	#7555	#7556	#7557
#15 	#7558	#7559	#7560	#7561
#20 	#7562	#7563	#7564	#7565

5 - Files



#25 NiTi Transitional Files*

SIZE	16–19mm	20–23mm	24–27mm	28–31mm
#.08	#7546	#7547	#7548	#7549
#.06	#7542	#7543	#7544	#7545
#.04	#7538	#7539	#7540	#7541
#.02	#7534	#7535	#7536	#7537

5 - Files



NiTi Hand Files*

SIZE	19mm	23mm	27mm	31mm
 #25	#7501	#7502	#7503	#7504
 #30	#7505	#7506	#7507	#7508
 #35	#7509	#7510	#7511	#7512
 #40		#7513	#7514	#7515
 #45		#7516	#7517	#7518
 #50		#7519	#7520	#7521
 #55		#7522	#7523	#7524
 #60		#7525	#7526	#7527
 #70		#7528	#7529	#7530
 #80		#7531	#7532	#7533

5 - Files



* Refill packs are not autoclavable.

Endo-Eze® AET Classic Stainless Steel Files

UNIQUELY DESIGNED AND SUPREMELY EFFECTIVE

Packaged in handy "Patient Kits"
 to greatly simplify setup by staff



- Provide organized storage and easy tray setup
- Are more affordable than other systems
- Minimize apical transportation and ledging
- Follow the natural canal shape
- Include total apical instrumentation

Endo-Eze AET Patient Kits contain all the files needed to treat the majority of canal systems. This simplifies storage and setup, minimizing the need for a cluttered endo tub. Shaping files feature SafeTip ends, which only remove dentin on the upstroke and prevent apical transportation or ledging. Apical hand files feature a slightly greater taper to facilitate total apical instrumentation.

Each Patient Kit Contains
 Mechanical Shaping Files and Apical Hand Files



- #1564 - Extra-Short Patient Kit 16–19mm
- #1565 - Short Patient Kit 20–23mm
- #1566 - Medium Patient Kit 24–27mm
- #1567 - Long Patient Kit 27–30mm

3 - Shaping files - 1 each of #1, #2, and #3
 4 - Apical files - 1 each of #15, #20, #25, and #30



- #3246 - Extra-Short Shaping File Kit 16–19mm
- #3247 - Short Shaping File Kit 20–23mm
- #3248 - Medium Shaping File Kit 24–27mm
- #3249 - Long Shaping File Kit 27–30mm

4 - Shaping files - 1 each of #1, #C, #2, and #3



- #1590 - Empty Patient Kit

12 - Empty kits with sponge
 3 each - White, Yellow, Blue, and Green



Shaping Files

SIZE	16-19mm	20-23mm	24-27mm	27-30mm
#1	#1586	#1501	#1502	#1503
#2	#1587	#1507	#1508	#1509
#3	#1588	#1510	#1511	#1512
#C	#1589	#1504	#1505	#1506

6 - Files



Access Burs



Bur set creates ideal access preparation for root canal therapy



The Acorn Bur cuts only on the upstroke to remove chamber roof and pulp horns.

A safe-end Button Bur enlarges lateral access to the pulp chamber and canal orifices.

The Straight Line Access Bur removes any excess pulp horns and allows straight-line access to enlarge the canal orifices.

SHAPING FILES

Approximate Taper:

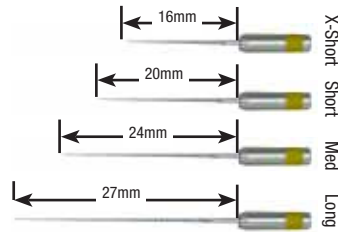
Shaping 1 = 2.5%

Shaping C = 3.5%

Shaping 2 = 4.5%

Shaping 3 = 6%

Tip Diameter: Shaping 1 = .10mm
All others = .13mm



ADJUSTABLE IN THE HANDPIECE

Apical Files

SIZE	19mm	23mm	27mm	30mm
#8	#1601	#1602	#1603	#1604
#10	#1610	#1519	#1520	#1521
#15	#1611	#1522	#1523	#1524
#20	#1612	#1525	#1526	#1527
#25	#1613	#1528	#1529	#1530
#30	#1619	#1531	#1532	#1533
#35	#1620	#1534	#1535	#1536
#40		#1537	#1538	#1539
#45		#1540	#1541	#1542
#50		#1543	#1544	#1545
Asst	#1618	#1516	#1517	#1518

(#10, 15, 20, 25, 30, 35)

6 - Files

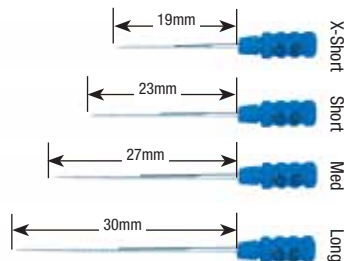


APICAL FILES

Taper:

10-20 = 2%

25-50 = 2.25%



#1562 - Access Bur Kit

5 - Burs (Round Carbide, Button, Acorn Small, Straight Line Access, Acorn Large)
1 - Bur Block



#1397 - Straight Line Access Bur 3pk

#1398 - Button Bur 3pk

#1403 - Acorn Bur Small 3pk

#1404 - Acorn Bur Large 3pk

3 - Burs



Endo-Eze® Rulers

#1295 - Endo-Eze Rulers

25 - Rulers





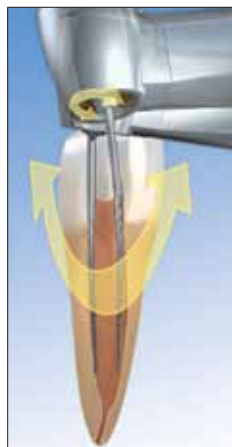
Endo-Eze® AET Handpiece

- Allows precise adjustment of file length
- Delivers minimally invasive “milling” motion
- Addresses each canal according to its unique anatomy

The Endo-Eze AET Handpiece features an E-type Air Motor with internal water spray and a push-button collet for on-the-fly adjustment of file lengths. Minimal (only 30°) reciprocating motion facilitates rapid, complete, uniform instrumentation of all the walls in an irregularly shaped canal, while preserving more tooth structure than traditional rotary systems. The handpiece uses Endo-Eze AET and TiLOS Shaping Files, designed to cut on their sides in a “milling” action rather than the “drilling” action of traditional rotary systems. This reciprocating motion all but eliminates file breakage.



Rapid, short reciprocation minimizes file separation and the removal of tooth structure.



RECIPROCATING HANDPIECE

Endo-Eze AET uses a reciprocating handpiece in a back-and-forth “milling” action, which follows the cross-sectional shape of the canal.

ADJUSTABLE FILE FEATURE MAXIMIZES VERSATILITY



The innovative Endo-Eze AET Handpiece allows for the length of each shaping file to be adjusted up to 3mm within the handpiece, minimizing instruments when cleaning and shaping.

#1154 - Endo-Eze AET Handpiece

#1136 - Endo-Eze AET Handpiece

1 - each Contra-Angle, Air Motor with Internal Spray

NOT AVAILABLE IN ALL COUNTRIES



#1155 - Reciprocating Contra-Angle for AET

1 - Contra-Angle

NOT AVAILABLE IN ALL COUNTRIES



#1178 - Air Motor with Internal Spray

1 - Air Motor

NOT AVAILABLE IN ALL COUNTRIES



#1345 - Air Motor Spray Cap

#1346 - Contra-Angle Spray Cap

1 - Spray Cap



EndoREZ®
CANAL SEALER



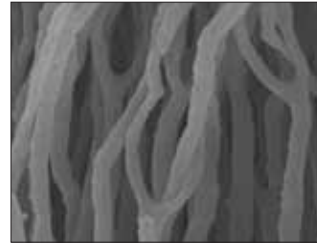
Mixing tip
#5920 - 20pk - pg 133

- The world's first hydrophilic and self-priming resin sealer
- Provides more effective obturation in less time
- Delivers a complete, thorough seal
- Has the same radiopacity as gutta percha
- Bonds to resin-based core/composite materials
- Retreats easily¹
- Is biocompatible
- Provides syringe delivery to the apex

The world's first syringe-delivered, self-priming canal sealer, EndoREZ minimizes the amount of chair time required for obturation. This thixotropic material has an affinity for moisture deep in dentinal tubules and lateral canals², providing the most complete seal available. Since methacrylate-based EndoREZ relies on chemistry rather than heat or pressure to fill the canal, the risk of additional root trauma/fracture is greatly reduced. The biocompatibility³ and low cytotoxicity⁴ help to extend the life of endodontic treatments. Rapid set can be further accelerated with EndoREZ Accelerator (page 111). Additionally, studies show that EndoREZ is versatile enough to be used as the sealer with any obturation method, e.g., master cone, lateral condensation, or warm gutta percha. Create a "monobloc" by using EndoREZ resin-coated gutta percha points (page 110).



Ultradent's patented NaviTip delivers EndoREZ into the entire anatomy of the canal in one step.



SEM analysis of EndoREZ penetration demonstrates an affinity for moisture deep in lateral canals³ and dentinal tubules. SEM at 5000X.



EndoREZ results in predictable fills that are radiopaque, easily diagnosed, and suitable for retreatment and post-and-core procedures.



SEM analysis of a canal sealed with EndoREZ shows dentinal infiltration and chemical bond with resin-coated gutta percha cones. SEM at 350X.

- #5901 - EndoREZ Obturation Kit 0.02 Taper Kit
- #5902 - EndoREZ Obturation Kit 0.04 Taper Kit
- #5903 - EndoREZ Obturation Kit 0.06 Taper Kit

- 1 - 5ml Dual Barrel syringe
- 20 - Skini syringes
- 20 - Mixing tips
- 20 - Assorted NaviTips - 29ga
- 120 - EndoREZ Points



Shelf Life: 18 months. Refrigerate.

#5900 - EndoREZ Kit

- 1 - 5ml Dual Barrel syringe
- 20 - Mixing tips



Shelf Life: 18 months. Refrigerate.

1 Zmener Osvaldo et al: Efficacy of an automated instrumentation technique in removing resin-based, zinc oxide and eugenol endodontic sealers when retreatment root canal: An in vitro study. Endodontic Practice 2005 May pp 29-33 2 Bergmans L, Moisiadis P, Van Meerbeek B, Labrechts P. Infiltration capacity of a hydrophilic resin-filler EndoREZ into root dentinal tubules. Unpublished study, internal data on hand. 3 Becce, C., Pameijer, C.H. Biocompatibility of a New Endodontic Sealer. IADR Abstract #2483, Goteborg 2003. 4 Zmener, O., Banegas, G., Pameijer, C.H., et al. Bone tissue response to a methacrylate-based endodontic sealer: A histological and histometric study. Journal of Endodontics, 31, 6, June 2005, pp. 457-459.

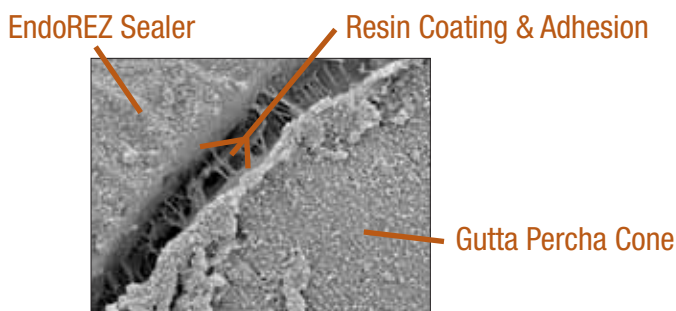
EndoREZ® Points

RESIN-COATED GUTTA PERCHA POINTS



- The ONLY resin coated gutta percha
- Chemically bonds to EndoREZ and other resin-based sealers

EndoREZ Points are standard ISO-sized gutta percha points overlaid with a thin resin coating, which bonds chemically to EndoREZ and other resin-based sealers. They are the first gutta percha points to achieve a chemical bond with resin-based sealers, providing a more effective seal than traditional gutta percha.



- #1605 - 0.02 Taper Asst - 25, 30, 35
- #3317 - 0.02 Taper Asst - 40, 45, 50
- #1631 - 0.02 Taper 25
- #1632 - 0.02 Taper 30
- #1633 - 0.02 Taper 35
- #1675 - 0.02 Taper 40
- #1676 - 0.02 Taper 45
- #1705 - 0.02 Taper 50

60 - 0.02 EndoREZ Points



Shelf Life: 48 months.

- #1606 - 0.04 Taper Asst - 25, 30, 35
- #3318 - 0.04 Taper Asst - 40, 45, 50
- #1634 - 0.04 Taper 25
- #1635 - 0.04 Taper 30
- #1636 - 0.04 Taper 35
- #1707 - 0.04 Taper 40
- #1709 - 0.04 Taper 45
- #1710 - 0.04 Taper 50

60 - 0.04 EndoREZ Points



Shelf Life: 48 months.

- #1607 - 0.06 Taper Asst - 25, 30, 35
- #1637 - 0.06 Taper 25
- #1638 - 0.06 Taper 30
- #1639 - 0.06 Taper 35

60 - 0.06 EndoREZ Points



Shelf Life: 48 months.

Absorbent Paper Points



- Sterile
- Color-coded
- Highly absorbent

Ultradent's Paper Points quickly and efficiently absorb liquid from the canal and are sold in packs of 120 for a cost effective solution. For a more efficient way to dry canals, see Ultradent's Luer Vacuum Adapter, page 119.

- #1553 - 25-50 Asst - 20 of each size
- #1560 - 20
- #1554 - 25
- #1555 - 30
- #1556 - 35
- #1557 - 40
- #1558 - 45
- #1559 - 50

120- Paper points



Shelf Life: 24 months.

EndoREZ® Accelerator



- Accelerates EndoREZ polymerization
- Enables post preparation in the same appointment

EndoREZ Accelerator reduces EndoREZ set time from 20–30 minutes to about five minutes, before the commencement of post-endo restorative procedures, enabling the start of definitive coronal restorations right away. It is designed to work hand-in-hand with groundbreaking EndoREZ for reliable obturation and minimized chair time.



Deliver EndoREZ Accelerator to the canal using an accessory cone as the carrier.



Begin post-and-core or any other definitive restorative work after just five minutes.

#399 - EndoREZ Accelerator - Single Use

20 - Vials

Shelf Life: 18 months. Refrigerate.



Thank You Townies!



Award Winners:

- Opalescence® - pages 4-7
- Opalescence® TrèswHITE™ Supreme - pages 8-9
- Ultradent® Diamond Polish - page 91
- UltraSeal® XT plus - pages 26-27
- Seek® and Sable Seek® - page 36
- Ultra-Etch® - pages 64-65
- Ultrapak® - pages 54-55
- ViscoStat® - pages 50-51
- ViscoStat® Clear - page 52

Clinical Technique

Unlike other obturation systems, EndoREZ is more conducive to immediate correction/retreat if upon verification you are not happy with the extension into the canal. We recommend that you simply capture a final X-ray before searing off the cone; if you feel you need to lengthen or shorten, remove and address.



1. Fit EndoREZ Points to length. Verify radiographically.



2. Dry the canal space using the Capillary Tip and Luer Vacuum Adapter, followed by paper points for 1–2 seconds each (point should be damp 1–3mm at tip). Trial fit master cone into the canal ensuring apical tugback.



3. Using a NaviTip on a Syringi filled with EndoREZ, insert the tip to 2–4mm short of the apex. Express the EndoREZ while withdrawing until EndoREZ is seen at the top of the canal. To avoid bubbles, keep end of tip buried in the EndoREZ while withdrawing.



4. Insert the master EndoREZ Points cone to length. #25 accessory points are recommended. EndoREZ will set in the canal in about 20–30 minutes. Sear off extraneous gutta percha and restore coronal aspect. EndoREZ is conducive to lateral condensation or warm gutta percha techniques.

Sable™ Seek® and Seek®
CARIES INDICATORS



Black Mini Brush tip
#1432 - 500pk - pg 128

- Provides precise, mess-free delivery
- Easily identifies demineralized dentin and root canal orifices
- Dark green Sable Seek is great near vital pulp

Sable Seek caries indicator, containing FD&C dyes, and Seek caries indicator, containing D&C dyes in a glycol base, stain carious dentin.

Uses

Seek and Sable Seek identify demineralized dentin in difficult-to-see places — for example, under the overhanging enamel of Class I, II, or III preparations, or along the DE junction of the preparation. Sable Seek green prevents over-excavating deep caries, which can lead to pulp exposure. Non-mineral dentin should be removed to improve the bond strength of the entire restoration. Red Seek is easily visible on dark dentin as a fast, easy way to locate calcified root canal orifices.



Sable Seek Caries Indicator is excellent for locating the pulp chamber floor.

Apply Sable Seek to the pulp chamber with a brush tip. Rinse with air/water spray while vacuuming.

After rinsing and vacuuming the pulp chamber, Sable Seek's FD&C dye formulation identifies calcified canals.

#233 - Sable Seek Kit

- 4 - 1.2ml syringes
- 20 - Black Mini Brush tips



Shelf Life: 36 months.



#234 - Sable Seek Refill

- 4 - 1.2ml syringes

#1805 - Sable Seek Econo Refill

- 20 - 1.2ml syringes

Shelf Life: 36 months.

#209 - Seek Kit

- 4 - 1.2ml syringes
- 20 - Black Mini Brush tips



Shelf Life: 36 months.



#210 - Seek Refill

- 4 - 1.2ml syringes










#1804 - Seek Econo Refill

- 20 - 1.2ml syringes

Shelf Life: 36 months.

¹ www.realityesthetics.com

NaviTip Reference Guide

Product	Recommended Tip	Compatible Tip/s
 ChlorCid[®]	31ga	29ga, 30ga, and NaviTipFX
 ChlorCid[®] V	29ga	30ga and NaviTipFX
 File-Eze[®]	30ga	29ga and 31ga
 EDTA 18%	NaviTip FX	29ga, 30ga, and 31ga
 Consepsis[®]	30ga	29ga, 31ga, and NaviTipFX
 Consepsis[®] V	29ga	30ga
 UltraCal[®]	29ga	—
 Citric Acid	NaviTip FX	29ga, 30ga, and 31ga
 EndoREZ[®]	29ga	30ga

* All of Ultradent's irrigants, lubricants, and medicaments are compatible with methacrylate resin sealers.

ChlorCid® and ChlorCid® V
SODIUM HYPOCHLORITE SOLUTIONS



ChlorCid and ChlorCid V disinfecting solutions contain 3% sodium hypochlorite. ChlorCid V is a more viscous solution for enhanced flow control and lubrication, if desired.

#67 - ChlorCid IndiSpense Syringe
#1467 - ChlorCid V IndiSpense Syringe

1 - 30ml syringe

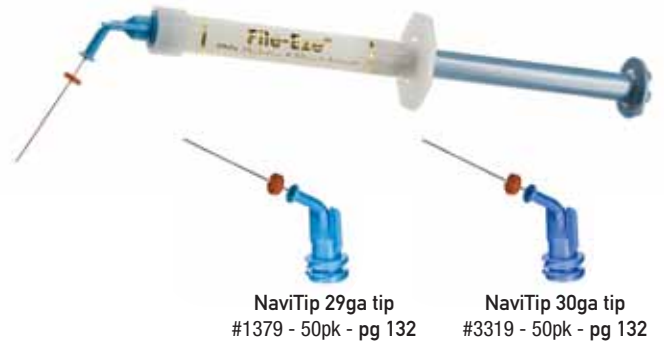
NOT AVAILABLE IN ALL COUNTRIES



Shelf Life: 18 months.

File-Eze® EDTA Lubricant

FILE LUBRICANT



- Peroxide-free; will not affect the set of methacrylate resin sealers

File-Eze is an effective 19% EDTA in a water-soluble, viscous solution for chelating, lubricating, and debriding root canal preparations.

The following lubricants contain peroxides that are not compatible with EndoREZ: EndoGel*, EndoSequence*, Glyde*, Prolube*, RC Prep*, and SlickGel ES*.

#1075 - File-Eze Kit

4 - 1.2ml syringes
20 - NaviTip tips - Assorted 30ga - 5 of each length



Shelf Life: 36 months.

#297 - File-Eze Refill

4 - 1.2ml syringes



Shelf Life: 36 months.

#682 - File-Eze IndiSpense Syringe

1 - 30ml syringe

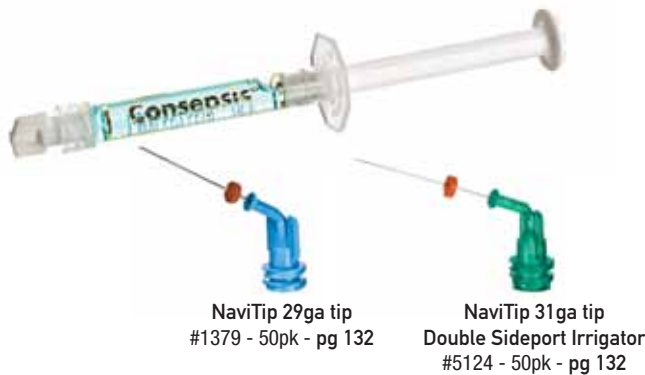


Shelf Life: 36 months.

* Registered trademarks of a company other than Ultradent. U.S. Patent Nos: 5,697,918 and 6,422,865.

* All of Ultradent's irrigants, lubricants, and medicaments are compatible with methacrylate resin sealers.

Consepsis®
CHLORHEXIDINE ANTIBACTERIAL SOLUTION



Uses

Consepsis is recommended for procedural endodontic disinfection, as a final endodontic rinse prior to canal obturation, and prior to pulp capping. Consepsis should be used after smear layer removal for canal disinfection, and sodium hypochlorite should be rinsed and removed prior to using Consepsis.

Note: DO NOT mix Consepsis and ChlorCid in the canal as a harmful precipitate will form.

Consepsis® V
CHLORHEXIDINE ANTIBACTERIAL SOLUTION

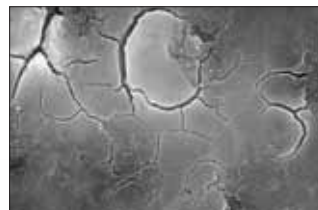
- Designed for endodontic disinfecting purposes
- A more viscous formulation of Consepsis
- Stays in place, even in maxillary canals



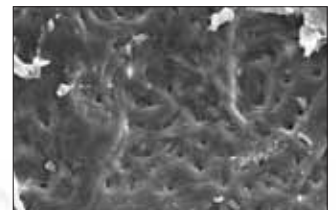
Use Consepsis to disinfect canals during endodontic procedures.

Ultradent® EDTA 18% Solution

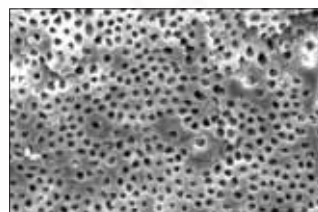
A root canal chelating agent that conditions/cleans through a chelation process, Ultradent EDTA 18% Solution is the irrigant of choice for smear layer removal and can be used as a final irrigant prior to obturation.



1. Canal instrumentation (no irrigants or lubricants). Smear layer intact in canal.



2. Canal instrumentation plus sodium hypochlorite. Smear plugs still intact.



3. Canal instrumentation with both sodium hypochlorite and EDTA. Smear layer is removed. Clean, open tubules.



4. Close up of Figure 3.



#687 - Consepsis
IndiSpense Syringe

1 - 30ml syringe

NOT AVAILABLE IN ALL COUNTRIES

Shelf Life: 48 months.

#2210 - Consepsis V
IndiSpense Syringe

1 - 30ml syringe

NOT AVAILABLE IN ALL COUNTRIES

Shelf Life: 24 months.

#491 - Consepsis Econo Refill

20 - 1.2ml syringes

NOT AVAILABLE IN ALL COUNTRIES

Shelf Life: 48 months.



#162 - EDTA 18% IndiSpense Syringe

1 - 30ml syringe

Shelf Life: 24 months.



1 www.realityesthetics.com International Patents Granted and Pending.

* All of Ultradent's irrigants, lubricants, and medicaments are compatible with methacrylate resin sealers.

UltraCal® XS CALCIUM HYDROXIDE PASTE



- Antibacterial
- Radiopaque
- Superior at delivery control

UltraCal XS is a uniquely formulated 12.5 pH calcium hydroxide paste that is both aqueous and radiopaque. For years, calcium hydroxide has been recognized as an antibacterial agent due to its high pH as well as its ability to potentially stimulate healing of bone. We recommend the larger 29ga NaviTip tip for predictable flow, enabling direct placement. UltraCal XS can be easily and thoroughly removed from the canal using Ultradent Citric Acid and a NaviTip FX.

"I have used this material for years to help 'cool down' the abscessed teeth I am performing endo on. It is a great product that consistently yields predictable relief. My patients and I love it."
DR. C. W. BOYCE – SIKESTON, MO

#1027 - UltraCal XS Kit

- 4 - 1.2ml syringes
- 20 - NaviTip tips - Assorted 29ga - 5 of each length



Shelf Life: 24 months.



#606 - UltraCal XS Refill #5117 - UltraCal XS Econo Refill

- 4 - 1.2ml syringes
- 20 - 1.2ml syringes

Shelf Life: 24 months.

Ultradent® Citric Acid 20% Solution

- Recommended as a cleanser/conditioner of prepared root canals
- Removes mineral and smear layers
- Slightly viscous formula facilitates lubrication

Ultradent Citric Acid is a mild acidic material that is effective at dissolving/cleaning calcium hydroxide, e.g., UltraCal XS. It is also recommended as a cleanser/conditioner to remove smear layer from dentinal walls. Deliver with the NaviTip or the NaviTip FX.

U.S. Patent No: 5,697,918.



NaviTip FX 30ga tips
#1452 - White 17mm 20pk - pg 130
#1454 - Blue 25mm 20pk - pg 130

#329 - Citric Acid IndiSpense Syringe

- 1 - 30ml syringe



Shelf Life: 18 months.



Endo "Donut" Technique

PermaFlo DC flowable composite is used with dentin bonding to extend root on compromised tooth.



1. When performing a root canal on a severely broken-down tooth, remove decay and overlying soft tissue, then achieve hemostasis with ViscoStat or Astringedent and a Dento-Infusor tip.



2. Note how jaws of rubber dam clamp are barely engaging tooth. The "Donut" technique achieves extension of root when retention of clamp would otherwise be difficult or impossible. If retention of clamp is not a problem, simply seal out saliva using OraSeal Caulking.



3. Prepare dentin for bonding by etching and applying Peak LC Bond Resin. Maintain a clean field with vacuum only while bonding if initial clamp retention is impossible.



4. Place donut shaped layers of PermaFlo DC on top of each other. Cure each layer before adding additional layers. Although composite could be used, the viscosity and delivery of PermaFlo DC is ideal. PermaFlo DC bonds to cured Peak LC Bond Resin.



5. Use of PermaFlo DC Opaque White contrasts with dentin, aiding in removal of material that may lap past root. Access opening is sealed with UltraTemp temporary cement for easy access following initial treatment of canal(s). Root canal is completed as usual. Seal rubber dam with OraSeal Caulking as usual, if any leakage of saliva occurs after "Donut" extension is completed.



6. After completion of root canal, "Donut" build-up functions as a matrix for composite core with direct post placement. We recommend using PermaFlo DC.

Reference "Pathways to the Pulp," 7th Edition, Fig 5-44, pg 113.

PermaFlo® Purple



Micro 20ga tip
#1437 - 500pk - pg 131

Uses

PermaFlo Purple is used with an adhesive system to create an easily identified coronal seal. The purple color simplifies location of the pulp chamber floor when accessing the pulp chamber for future therapy.



(Courtesy of Dr. Fred Barnett)

1. Root canal has just been completed. Clean with water if EndoREZ has been used. (If significant unset EndoREZ is exposed at canal orifice, coat with thin layer of Ultra-Blend and light cure.) Blot or air dry. Note: If eugenol or similar based sealers have been used, wait until set and freshen all chamber and/or preparation surfaces with diamond bur prior to bonding.



2. Etch and place Peak LC Bond; light cure. Optional: Use Peak SE Primers and Peak LC Bond.



3. Apply a 1–1.5mm thick layer of PermaFlo Purple. Light cure 20 seconds. Value: An immediate "coronal seal." When a post and/or core is prepared, the purple identifies extent of root canal preparation and/or pulp chamber. The contrast educates clinician as to where floor of pulp chamber is, minimizing risk of perforation.



4. Alternative option: Apply PermaFlo Purple over the canal orifices.

Apply dentin bonding agent first. Remember that eugenol containing sealers can prevent polymerization of bonding resins. We recommend EndoREZ, the hydrophilic resin sealer.

#962 - PermaFlo Purple Mini Refill

2 - 1.2ml syringes



Shelf Life: 24 months. Refrigerate.

Ultradent® Luer Vacuum Adapter



0.014" (0.36mm) Capillary tip
#3099 - 50pk - pg 129

- A great time-saver for any practice
- Dries canals quickly and efficiently
- Minimizes paper point use

Slide Ultradent's Luer Vacuum Adapter onto any chair-side HVE unit to efficiently remove irrigants and debris. Compatible with any Luer tip, the Luer Vacuum Adapter saves time and minimizes the use of paper points. Optimally used with Capillary Tips, which offer tapered, flexible cannulae that reach deep into canals for enhanced cleaning and drying.



Put an end to bloody paper points. Use the Luer Vacuum Adapter and Capillary tips for quicker and easier drying.



For vision while vacuuming during endodontic surgery, attach the desired size of bendable Endo-Eze tip to Luer Vacuum Adapter.

"The Luer Vacuum Adapter eliminates the need for fumbling with paper points! And the canals seem to be much drier — we couldn't do without it!"
DR. JEFF ROSENTHAL – CHESTERLAND, OH

#230 - Luer Vacuum Adapters

10 - Vacuum Adapters



1. Irrigate canals with ChlorCid through the NaviTip or 27 gauge Irrigator tip.



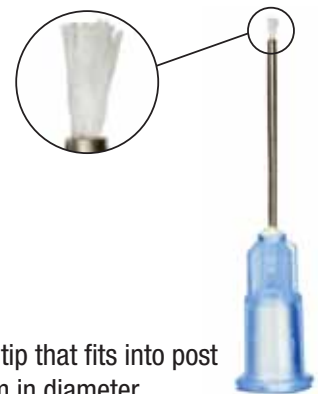
2. With Capillary tip attached to vacuum, slide tip deep into the canal. Move tip in and out while vacuuming. One can usually hear and/or see the solutions being removed from the canal.



3. Insert a paper point into canal to verify completeness of drying.

Dries canals
faster than ever

Deliver-Eze™ Brush Tip



- Allows precise placement
- The only bendable metal brush tip that fits into post preparations as small as 0.6mm in diameter

The Deliver-Eze Brush Tip's shapeable, flexible cannula makes the delivery of primers to tooth surfaces and post preparations easy, especially in hard-to-reach posterior cases. The metal cannula will not crimp during normal use. The Deliver-Eze Brush Tip fits into endodontic post preparations as small as 0.6mm in diameter, offering precise delivery and treatment.

See PermaFlo DC Primers A & B, pgs 84–86.

#5125 - Deliver-Eze

50 - Brush tips

#5126 - Deliver-Eze

100 - Brush tips

UniCore®
 POST AND DRILL SYSTEM

- Superior strength
- Esthetic and radiopaque
- The only 3-in-1 drill
- Color-coded drills and posts
- Autoclavable as packaged
- Ultradent's UniCore "Kit of Kits" provides all items needed for post requirements



UniCore posts match the characteristics of dentin, minimizing the likelihood of root fracture. The use of fiber posts results in more natural and esthetic restorations than metal posts. Pre-stressed fibers run the length of the posts for superior strength; posts are perfectly matched to a durable drill that can be used for up to 15 procedures to remove rigid, carrier-based obturators (e.g., Thermafil*), gutta percha, or composite from canals as part of a post placement procedure. The drill may also be used for up to five procedures to remove existing fiber posts. Stored in autoclavable, color-coded packaging.



**UniCore Drill
 Ultra-Safe**

Durable drill can be reused to excavate gutta percha or Thermafil up to 15 times, and pre-existing fiber posts up to 5 times.

Drills and posts are color-coded according to size, simplifying chairside use.

Patented diamond-coated collar prevents binding in access openings.

Uniquely-designed flutes ensure rapid and consistent removal of obturators from the canal.

Heat-generating tip facilitates rapid removal of stubborn obturators like Thermafil, gutta percha, and pre-existing fiber posts.

**UniCore Post
 Pre-stressed fibers
 and bondable**

• Microporous surface ensures physical, micro-retentive bond with cement.

• No chairside chemical treatment required.

• Radiopaque beyond highest ISO standards.

• Translucent post allows light-curing of dual-cure cement to core material.

• Gently tapered design works in harmony with natural anatomy of the tooth.

• Can be easily removed if endodontic retreatment is required.



#7130 - UniCore Analog Try-Ins

32 - ea Sizes 1-4



- #7134 - Drill Size 0 (0.6mm) - White ○
- #7121 - Drill Size 1 (0.8mm) - Yellow ●
- #7122 - Drill Size 2 (1.0mm) - Red ●
- #7123 - Drill Size 3 (1.2mm) - Blue ●
- #7124 - Drill Size 4 (1.5mm) - Green ●

1 - Drill



- #7135 - Post Size 0 (0.6mm) - White ○
- #7125 - Post Size 1 (0.8mm) - Yellow ●
- #7126 - Post Size 2 (1.0mm) - Red ●
- #7127 - Post Size 3 (1.2mm) - Blue ●
- #7128 - Post Size 4 (1.5mm) - Green ●

5 - Posts



#7132 - UniCore Starter Kit

2 - Drills - Sizes 1 and 2
 10 - Posts - 5 each size 1 and 2



#7120 - UniCore Kit "Kit of Kits"

4 - Drills - Sizes 1-4
 20 - Posts - Sizes 1-4



#7133 - UniCore Size 0 Supplement Kit

1 - Drill - Size 0
 5 - Posts - Size 0 **Smallest bondable post made**



* Thermafil is a registered trademark of a company other than Ultradent. 1 www.realityesthetics.com
 U.S. Patent No: 6,902,400; 7,278,852 and 7,347,692.