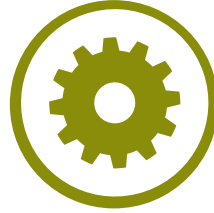


Equipment



VALO

Ultra-Blaster

UltraVac

Ultrasep III

Vacuum Former Sheets

Utility Vinyl Cutters

Ultra-Trim Scalloping Scissors

Opti-Prep Ultra

UltraTect



Dr. Frazier Keck, Chapel Hill, NC
Bodie Island Lighthouse, North Carolina



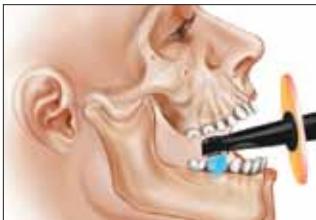
VALO®
LED CURING LIGHT



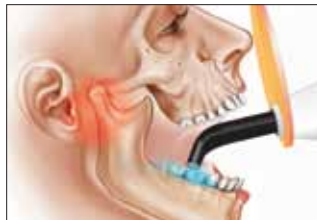
- Optimally collimated beam delivers a complete, uniform cure
- Broadband LEDs cure all dental materials
- Three curing options — standard, high power and plasma emulation — offer convenience and flexibility
- Slim, ergonomic wand allows unprecedented access to all restoration sites
- Unique unibody design is both extremely durable and lightweight

Uses

VALO uses a custom, multi-wavelength Light Emitting Diode (LED) for producing the high intensity light at 395–480 nm capable of polymerizing all light-cured dental materials. This intensity will also penetrate porcelain and is capable of curing underlying resin cements similar to a quality halogen light. VALO has a medical grade, international power supply and is suitable for power outlets from 100 to 240 volts. The handpiece is designed to rest in a standard dental unit bracket or can be custom mounted using the bracket included in the kit.



Low-profile design accesses hard-to-reach spots, even in smaller mouths.



No more overstretching of TMJ or soft tissues.

"... the latest LED technology shows [VALO] to be promising as it finally challenges the level of rapid cure long demonstrated by plasma arc light.... There are now LED alternatives for fast cure at a lower cost."

DR. GORDON J. CHRISTENSEN (2009). *New LED Lights Challenge Plasma Arc. Clinician's Report 2(3), 1*

"The fact that VALO is small and light weight makes it one of a kind and an ideal choice for an orthodontist."

DR. PAUL UPATHAM, DDS, MS - SAN DIEGO, CA

"A new wave of LEDs is here! The sleek VALO operates with standard curing, and innovative high powered curing options. It is compact, light to the touch, and offers the benefits of three lights in one."

DR. MARK COLONNA, DDS

"VALO is a fantastic piece of equipment. Clinicians no longer have to choose between normal output, high intensity output, or the power of a PAC light, because VALO offers all three in one lightweight, compact, durable unit. VALO's ability to produce the greatest amount of energy at distances up to 10mm from the tooth is just amazing. I have been using this light for some time and would not want to be without it."

DR. JOHN KANCA, DDS

#5919 - VALO Kit

- 1 - VALO LED curing light - 7' cord
- 1 - Power supply with universal plugs - 6' cord
- 1 - Handpiece bracket holder
- 1 - Light shield
- 50 - VALO Barrier sleeves



#5930 - VALO Power Supply - 6' cord #5933 - VALO Power Supply - 16' cord

- 1 - Power supply with universal plugs



#5932 - Barrier Sleeves

- 500 - Barrier sleeves



#5934 - Point Cure Lenses (Reusable, may be cold sterilized)

- 2 - Lenses



#5938 - EndoGuide Lenses

- 2 - Lenses



#5935 - Light Shield 1pk

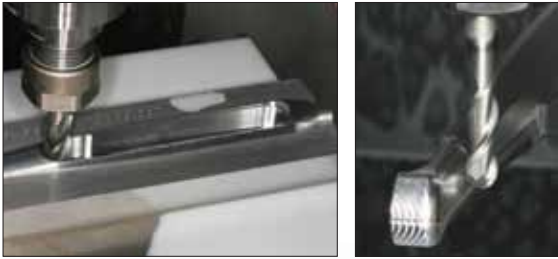


#1667 - Mounting Bracket 1pk





VALO starts as a single bar of high-grade, aircraft aluminum, which is CNC precision milled at Ultradent's facility in Utah, USA.



True uni-body construction via machining ensures VALO's durability and superior heat dissipation, and facilitates the elegant, ergonomic, and streamlined design that enables VALO to access areas other curing lights simply cannot reach.

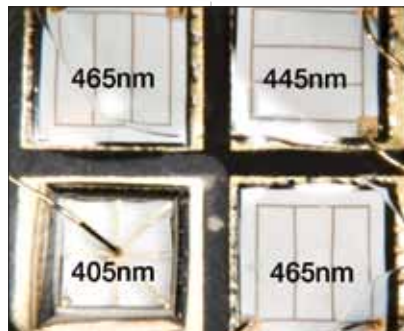
Sapphire-hard coating is scratch-resistant

Teflon® seal provides ease of cleaning

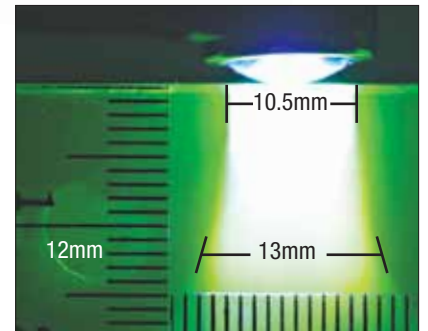
Thin cord features Kevlar® strands for unprecedented strength and flexibility



VALO's high-tech circuitry produces three curing modes: Standard, High Power, and Plasma Emulation. VALO is three lights in one.



VALO's custom LED pack with lights of three wavelengths enables VALO to cure all proprietary photoinitiators and camphorquinone.



The optimally collimated beam ensures that VALO maintains its power density and cures uniformly over a range of surfaces and working distances.

From a single bar of aluminum to the most advanced curing light in the world—that's the VALO story.



Ultra-Blaster™ Microabrasion Unit



Surface microabrasion prior to metal bonding enhances bond strengths. Tin plating further enhances precious metals.



Prepare a metal surface for bonding. Use for composite and porcelain as well.



Protect tissues and adjacent prosthesis with OpalDam before abrasion process.

#177 - Ultra-Blaster

NOT AVAILABLE IN ALL COUNTRIES

UltraVac™ VACUUM FORMER



The lightweight UltraVac uses a single, three-position toggle switch that activates the unit's heating element, vacuum pump, and power. An indicator light in the UltraVac's base alerts the operator when the heating element is activated and ready for operation.

#1082 - UltraVac Vacuum Former - 110v
#1080-I - UltraVac Vacuum Former - 220v

NOT AVAILABLE IN ALL COUNTRIES

Ultrasep™ III

MOLD RELEASE

- Quickly and easily removes vacuum-formed parts
- Minimizes distortion and reduces defects
- Contains no CFC propellants or solvents
- Provides outstanding surface coverage
- Is both colorless and non-staining



#176 - UltraSep III

NOT AVAILABLE IN ALL COUNTRIES

Vacuum Former Sheets



For construction of die copings. Use this material for splints to fabricate temporaries. Cold acrylic fabrication.

#294 - Polypropylene Coping and Provisional Sheets
0.020" 50pk

0.020" THICKNESS



For provisional fabrication of temporary acrylic bridges and setting of denture teeth.

#279 - Clear Temporary Splint Sheets - 0.020" 50pk

0.020" THICKNESS



For vertical dimension appliances, such as bite raisers (heavy), space maintainers, or surgical trays (medium).

#280 - Treatment Coping and Provisional Sheets
0.060" 20pk - Medium

#281 - Treatment Coping and Provisional Sheets
0.080" 20pk - Heavy

0.060" THICKNESS

0.080" THICKNESS

Ultradent® Utility Vinyl Cutters



- Use for gross trimming of tray

#604 - Utility Vinyl Cutters



Ultradent® Ultra-Trim Scalloping Scissors



- Trims border around interdental papilla precisely
- Spring-loaded design minimizes finger fatigue
- Grips tray material easily
- Made of durable stainless steel

#605 - Ultra-Trim Scalloping Scissors



For Sof-Tray Classic Sheets in regular, medium, and heavy thicknesses, see page 21.

Opti-Prep™ Ultra



- Non-irritating
- Safe and biodegradable
- Minimal scrubbing required
- Odor free
- Inhibits scale
- Anti-corrosive
- Less damaging to rubber and silicones

Mix this powerful, safe, polymer-based powder with water to clean dental instruments. Opti-Prep Ultra can be used as a pre-soak or in an ultrasonic bath. The non-enzyme formula reduces damage to rubber and silicones. Opti-Prep Ultra's unique penetrating properties effectively remove tooth debris, tissue residue, and fluids from the surface of vacuum tubes, suction pipes, and dental instruments. Immersing instruments for five minutes in Opti-Prep Ultra solution achieved a log reduction of 3.24, which is equivalent to 99.9% reduction in test soil.¹



1. Electrostatic charge surrounding instrument. Biofilm tightly held to surface by electrostatic attraction.



2. The instrument is introduced into Opti-Prep Ultra solution. Polymer with both positive and negative charge exploits the electrostatic charge.



3. Surface charge is neutralized by the dual polarity of Opti-Prep Ultra, releasing the biofilm from the surface.



4. Instrument is coated with Opti-Prep Ultra polymer, insulating and protecting it from recontamination. It achieves 99.9% soil removal.

#1180 - Opti-Prep Ultra Kit

- 1 - Opti-Prep Ultra Container - 750g
- 1 - Scoop



Shelf Life: 60 months.

UltraTect™ Protective Eyewear



High-quality, protective eyewear conducive to the modern dental environment, UltraTect safety eyewear meets ANSI Z87.1 standards and CSA 794.3 high-impact and side shield requirements, yet weighs only 1.3oz. The lenses are made of molded polycarbonate rather than simple molded plastic, ensuring high optical properties and scratch resistance. Do not use for laser protection. Orange lens can be used to protect against the UV output of dental curing lights.

#914 - Smoke Frame/Smoke Lens

#501 - Clear Frame/Clear Lens

#508 - Orange Frame/Orange Lens 290nm to 320nm

¹ Bradley CR, Babb JR, Fraise AP. Assessment of the Cleaning Performance of Opti-Prep Ultra. Hospital Infection Research Laboratory, Birmingham City Hospital. 1998 (Lit# 1)